

**DAVE FERREY
CONSTRUCTION
CUSTOM HOMES**
570-256-3278

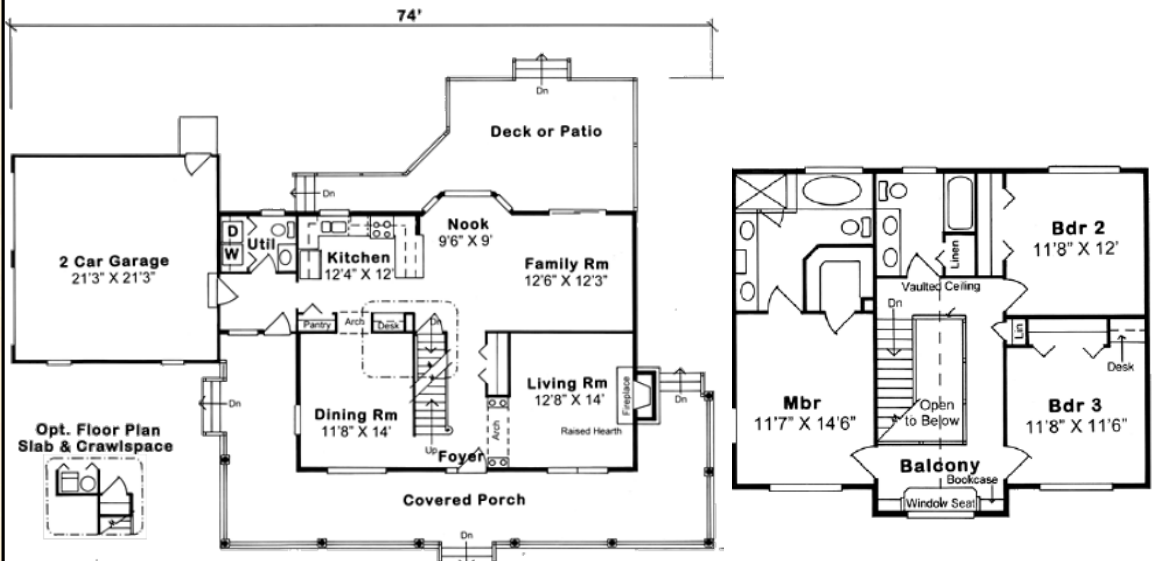
Manhattan

2,083 sq. ft.
Oaks Collection



Specifications

Total Living Area:	2,083 sq.ft.
Main Living Area:	1,113 sq.ft.
Upper Living Area:	970 sq.ft.
Garage area:	462 sq.ft.
House Width:	74'
House Depth:	41'6"
Bedrooms:	3
Baths:	2 1/2
Max Ridge Height:	27'
Porch:	581 sq.ft.
Deck:	330 sq.ft.
Formal Dining Room:	Yes
Fireplace:	Yes
Main Ceiling Height:	8'
Upper Ceiling Height:	8'
Foundation:	B, C, S
Walls:	2x6
Plan:	24245



Comfortable Country Living

For those seeking the comfort of Country architecture, this home is for you. A deep, covered wrapping porch provides plenty of protected space to enjoy the outdoors, rain or shine. Inside, the living room and dining room offer plenty of room for formal entertaining. To the rear a large family room enjoys sunny views to the backyard and shares open space with the kitchen and breakfast area. All bedrooms are located on the second level.

Photos or renderings will vary from actual plan.

Oaks Home Collection

**Your Oaks home package will include these basic package components:
(Upgrades and substitutions are available on most components)**

Exterior Shell Package

- Blueprints
- Treated sill plates
- Floor joists and rim joists
- 3/4" plywood floor
- 2"x6" wall framing
- OSB wall sheathing
- Building wrap
- Roof rafters or trusses per plan
- OSB roof sheathing
- Fiberglass roofing shingles
- Aluminum drip edge
- Roofing felt
- Roof ventilation
- Insulated windows
- Exterior trim
- Fiber cement siding
- Fiber cement soffit & fascia
- Fiber cement trim
- Gutters and downspouts
- Insulated exterior doors
- Exterior locksets
- Nails and hardware

Interior Package

- R-19 wall insulation
- R-30 ceiling insulation
- Insulation baffles
- Drywall,
- Drywall finishing materials
- Colonist primed interior doors
- 2 1/4" fingerjoint Colonial casing
- 3 1/4" fingerjoint Colonial base
- Shelving & closet rods
- Privacy and passage locks
- Fasteners and adhesives

Kitchen and Bath Packages

- Timberlake Tahoe Kitchen cabinets
- Post-formed laminated countertop
- Stainless steel double bowl sink
- Timberlake Tahoe Bathroom vanities
- Cultured marble vanity tops
- Bath cabinets & mirrors
- Tub/shower units



The following materials and services are not supplied by Dave Ferry Construction:

- Foundation
- Steel beams or columns
- Brick
- Stone
- Stucco
- Plumbing
- HVAC
- Electric
- Finish flooring

To order plans call 570-256-3278, or contact Dave Ferrey Construction.