

**TOTAL LIVING AREA:**  
1,588 SQ. FT.

## MT. AIRY II

*You Can Afford to Build This  
Charming Country Two-Story Home!*

### ENHANCED PLAN

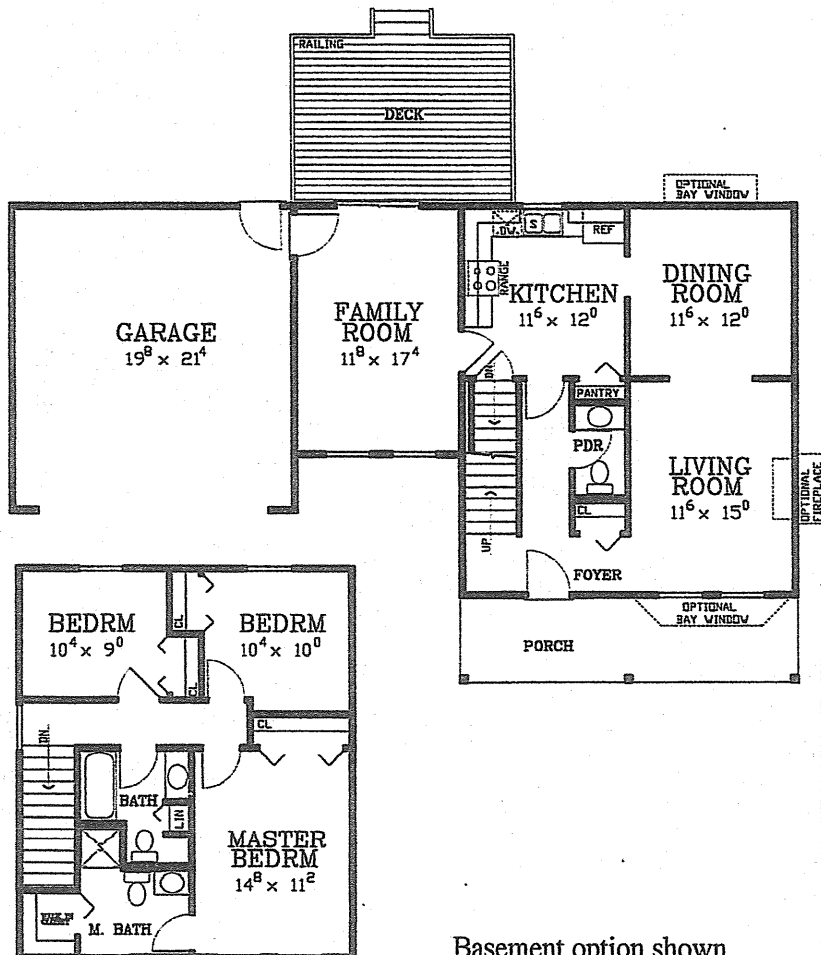
Improve the basic value plan with your choice of these options. Consult the floor plan and rear views to see how well these options will fit your lifestyle!

- Two-Car Garage (20' x 22')
- Front Porch with Railing (24' x 6')
- Rear Deck with Railing (16' x 12')
- Family Room (Adds 216 sq. ft.)
- Box Bay Window in Dining Room (Adds 10 sq. ft.)
- Angle Bay Window in Living Room (Adds 18 sq. ft.) (Only Available with Front Porch Option)
- Fireplace in Living Room (Zero Clearance)

Width: 56'

Depth: 46' (w/porch & deck)

Enhanced Rear View



Basement option shown

